

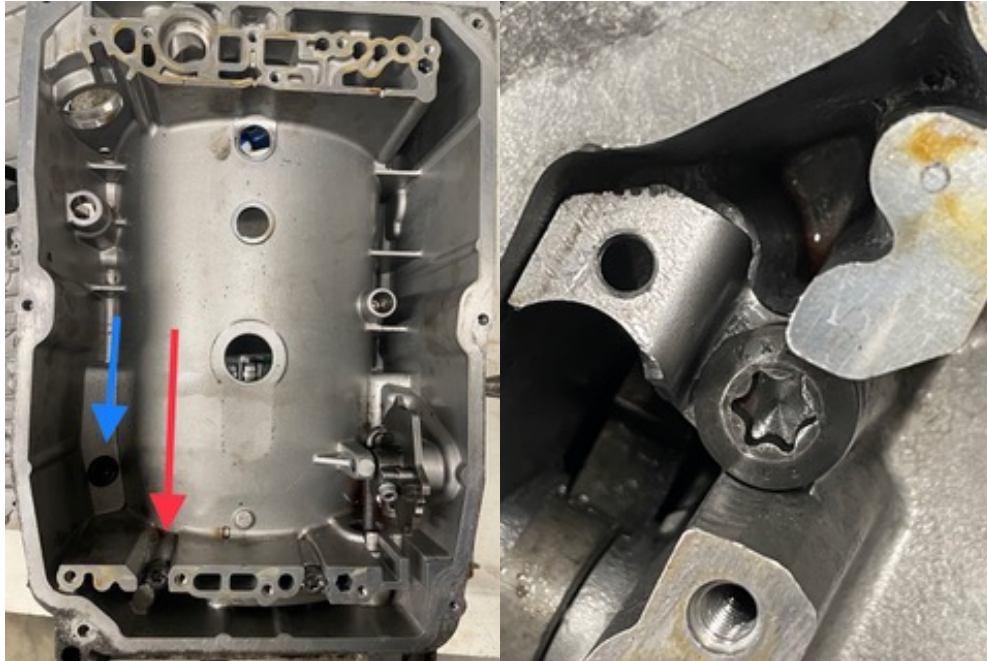
The speed sensor will be mounted inside the transmission where it will detect the 16 teeth from the park wheel inside .

Before installing :

Remove: 1 Oil Pan , 2 plug and plug socket , 3 the complete valve block

Now : remove the black securing bold red arrow

And drill a 12mm hole (center 28 mm from the back) blue arrow



Checkup

Place the selector in neutral and check that the output shaft turns freely.
Measure the two wires with a multimeter on ac while turning the output shaft by hand . The out put must be 0.25 volts or more

Now mount the sensor bracket under the long extracted bolt . 25nm
And bring the cable entry seal on its place into the 12mm hole
Place sensor and cable like pict 3
Mount valve blok (bolts 8nm) and socket.
Put the oil pan on its place again (bolts 8nm)